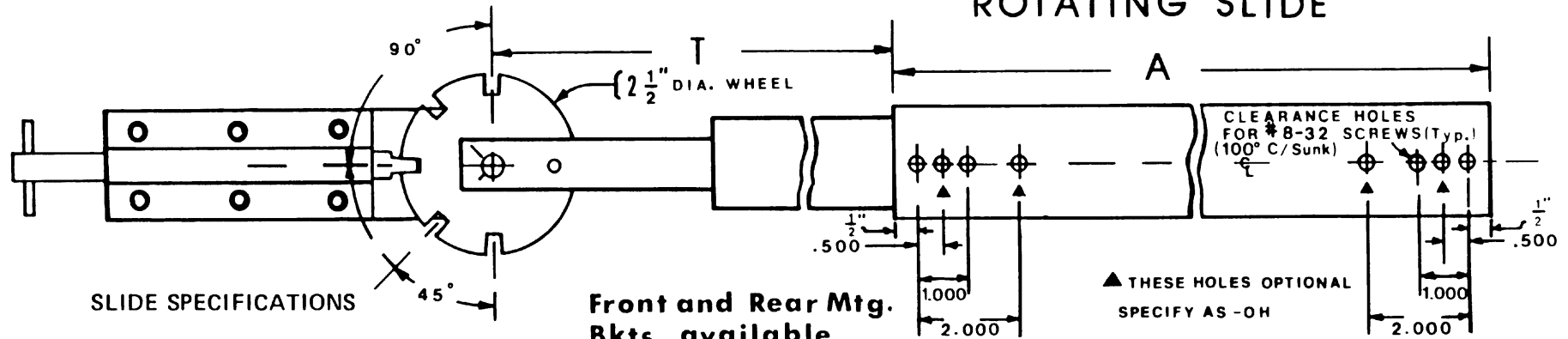


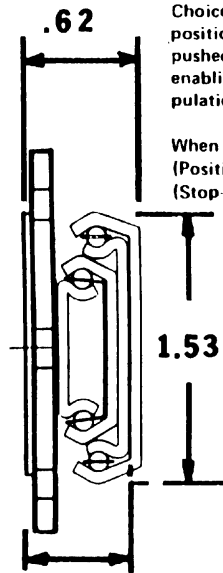
"ROTO-TRACK" BALL BEARING 3-SECTION

Series **ESBB-RT**



SLIDE SPECIFICATIONS

Front and Rear Mtg. Bkts. available
Send for spec. sheet on Mtg. Bkts.



Choice of Positive Locking in both directions in extended position or Stop-Out only (stops coming out, but can be pushed back into cabinet without releasing any catches), enabling easy entry of chassis into cabinet without manipulation of catches.

When ordering, specify as: example: ESBB RT 20 PL (Positive Locking when extended) or, ESBB RT 20 SO (Stop-Out).

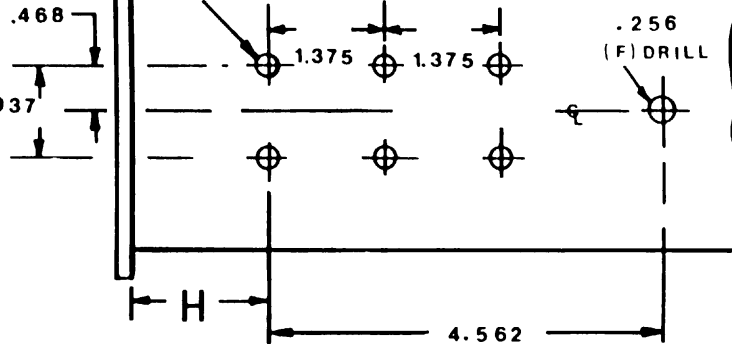
Matl. prime work hardened steel
Military Models available; specify as: ESBBM -

For Fast - disconnect Specify as: -FD

.56

Any choice of combinations of lengths, engagements, mounting hole patterns, etc., available as a Barnes Engineering Company service at a nominal cost, or, in many cases at no additional cost.

FINISH: Bright Electro-Zinc Plated per QQZ-325 Type I, Silver Color



All Slides Quality Zinc Plated

***NOMINAL LOAD RATING: 100 POUNDS**

MODEL NO.	A	T	H	
			Min.	Max.
ESBB-RT-10	10	Check	1.31	
ESBB-RT-12	12	with factory	1.31	
ESBB-RT-14	14	9.50	1.31	
ESBB-RT-16	16	11.50	1.31	
ESBB-RT-18	18	13.50	1.31	
ESBB-RT-20	20	15.50	1.31	
ESBB-RT-22	22	17.50	1.31	
ESBB-RT-24	24	19.50	1.31	
ESBB-RT-26	26	21.50	1.31	
ESBB-RT-28	28	23.50	1.31	
ESBB-RT-30	30	25.50	1.31	

BARNES ENGINEERING COMPANY
 2715 DELTA PLACE
 COLORADO SPRINGS, CO 80910
 800-995-6050 PHONE
 719-390-6700 FAX
 www.slimtrack.com

"SLIM-TRACK" SLIDES

* Load Ratings are based on a pair of 18" Slides with Standard Extension

Series **ESBB-RT**