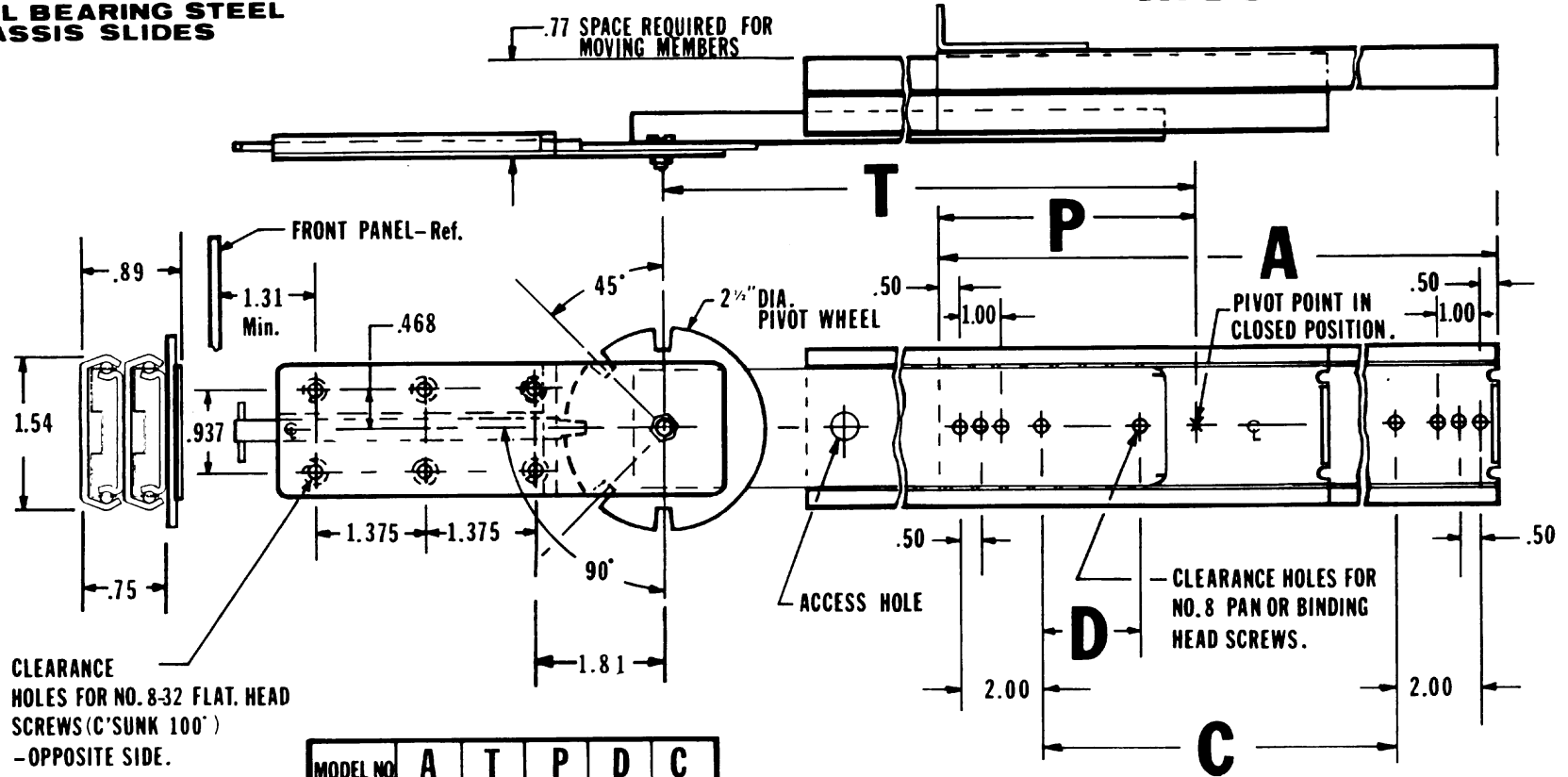


**SLIM-TRACK 3 SECTION  
BALL BEARING STEEL  
CHASSIS SLIDES**

**Model: FBB-RT**



CLEARANCE HOLES FOR NO. 8-32 FLAT. HEAD SCREWS (C'SUNK 100')  
-OPPOSITE SIDE.

MODEL NO	A	T	P	D	C
FBB-RT 10	10	11	5.50		5
FBB-RT 12	12	13	5.50	1	7
FBB-RT 14	14	15	6.50	1	9
FBB-RT 16	16	17	7.50	3	11
FBB-RT 18	18	19	8.50	3	13
FBB-RT 20	20	21	9.50	5	15
FBB-RT 22	22	23	10.50	5	17
FBB-RT 24	24	25	11.50	7	19
FBB-RT 26	26	27	12.50	7	21
FBB-RT 28	28	29	13.50	9	23
FBB-RT 30	30	31	14.50	9	25

- NOTES:**
1. Material: Prime work hardened cold rolled Steel.
  2. Finish: Bright Electro-Zinc Plated per QQZ - 20-PL (positive locking when extended). 325, Type 1, Silver Color.
  3. Load Capacity: 150 Pounds. - or and FBB-RT-20-SO (stop out only)
  4. Front and Rear Mtg. Brackets available.
  5. Military Models available; specify as: FBB-RTM.
  6. For Fast Disconnect specify as: -FD.

\* Load Ratings based on a pair of 18" Slides with Standard Extension

Choice of Positive Locking in both directions in extended position or Stop-Out Only (Stops coming OUT, but Can be pushed back into Cabinet without releasing any Catches), enabling easy entry of Chassis into Cabinet without manipulation of Catches.

BARNES ENGINEERING COMPANY  
2715 DELTA PLACE  
COLORADO SPRINGS, 80910  
800-995-6050 PHONE  
719-390-6700 FAX  
www.slimtrack.com