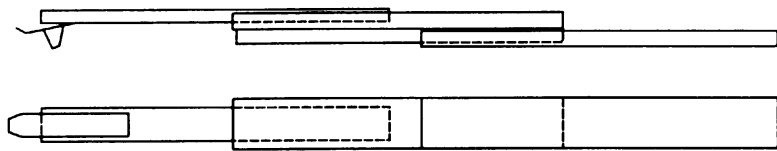
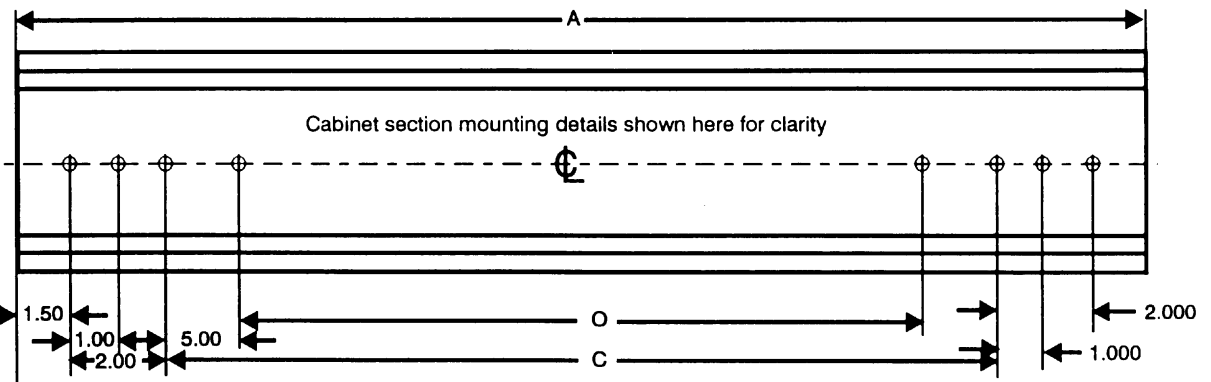
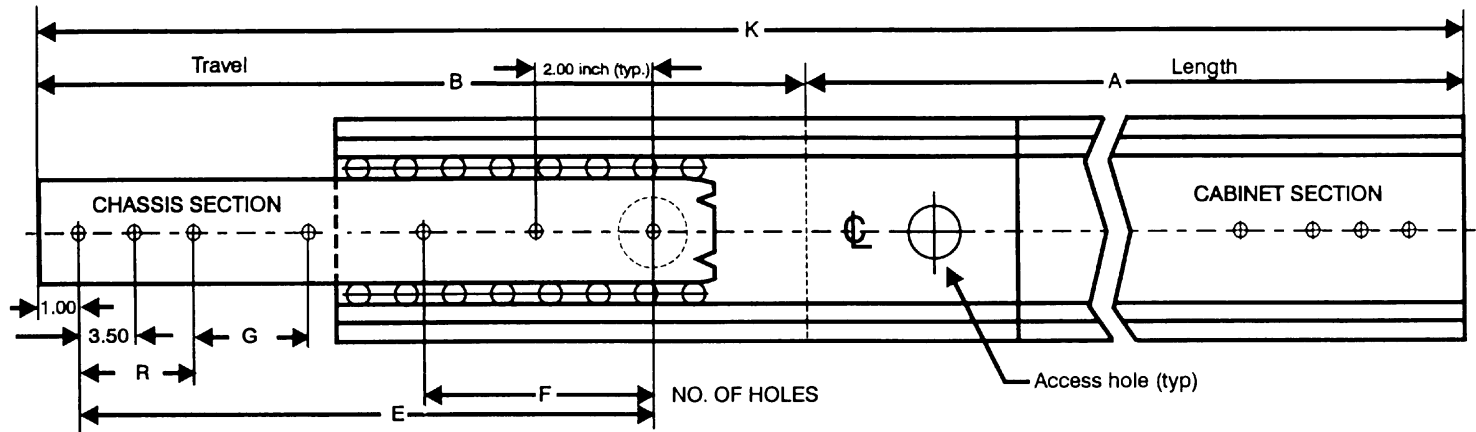
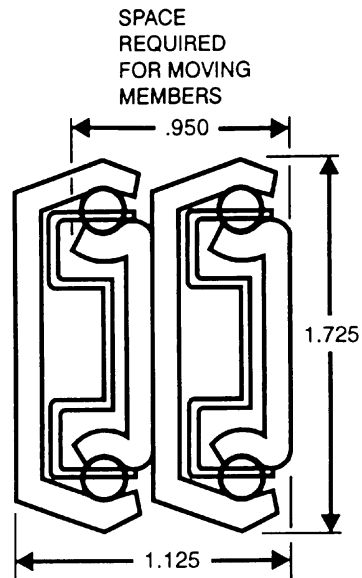


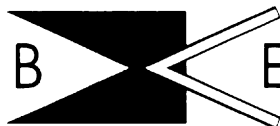
"SLIM-TRACK" 3-SECTION BALL BEARING SLIDE MODEL: HDFBB



NOTES:

MATERIAL: PRIME WORK HARDENED 13 GAUGE STEEL.
FINISH: BRIGHT ELECTRO-ZINC PLATED PER QQZ-325, TYPE 1.
 SILVER COLOR (AVAILABLE IN STAINLESS STEEL).
 MOUNTING HOLES .265 DIA.
 MOUNTING HOLE LOCATION TOLERANCE ± 0.015 .
 LOAD CAPACITY TO 400 LBS.*
 *LOAD RATINGS ARE BASED ON A PAIR OF 18" SLIDES WITH STANDARD EXTENSION.
 Choice of positive locking in closed position or stop-out only which enables easy entry of chassis into cabinet without manipulation of catches.
 Choice of combinations of lengths, engagements, mounting hole patterns, etc., available at Barnes Engineering Company, service at a nominal cost, or, in many cases at no additional cost.
 Additional holes available at Barnes Engineering Company's option.
 Front and rear mounting brackets are available.

When ordering, please specify features needed: e.g.
 SO (Stop Out Only)
 LI (Lock In When Closed)
 ND (Non-Disconnect)



BARNES ENGINEERING COMPANY
 2715 DELTA PLACE
 COLORADO SPRINGS, CO 80910
 TELEPHONE: (719) 390-6500
 FAX: (719) 390-6700
 TOLL FREE: (800) 995-6050
 www.slimtrack.com

SLIDE DIMENSIONS									
MODEL	A	B	C	E	F	G	K	O	R
HDFBB-10	10	11	3	8	1		21		
HDFBB-12	12	13	5	10	1		25		
HDFBB-14	14	15	7	12	1		29		
HDFBB-16	16	17	9	14	1		33		
HDFBB-18	18	19	11	16	2		37		
HDFBB-20	20	21	13	18	2		41	3	5.5
HDFBB-22	22	23	15	20	3		45	5	5.5
HDFBB-24	24	25	17	22	3		49	7	5.5
HDFBB-26	26	27	19	24	4	*	53	9	5.5
HDFBB-28	28	29	21	26	4	*	57	11	5.5
HDFBB-30	30	31	23	28	5	*	61	13	5.5

* OPTIONAL HOLE UPON REQUEST