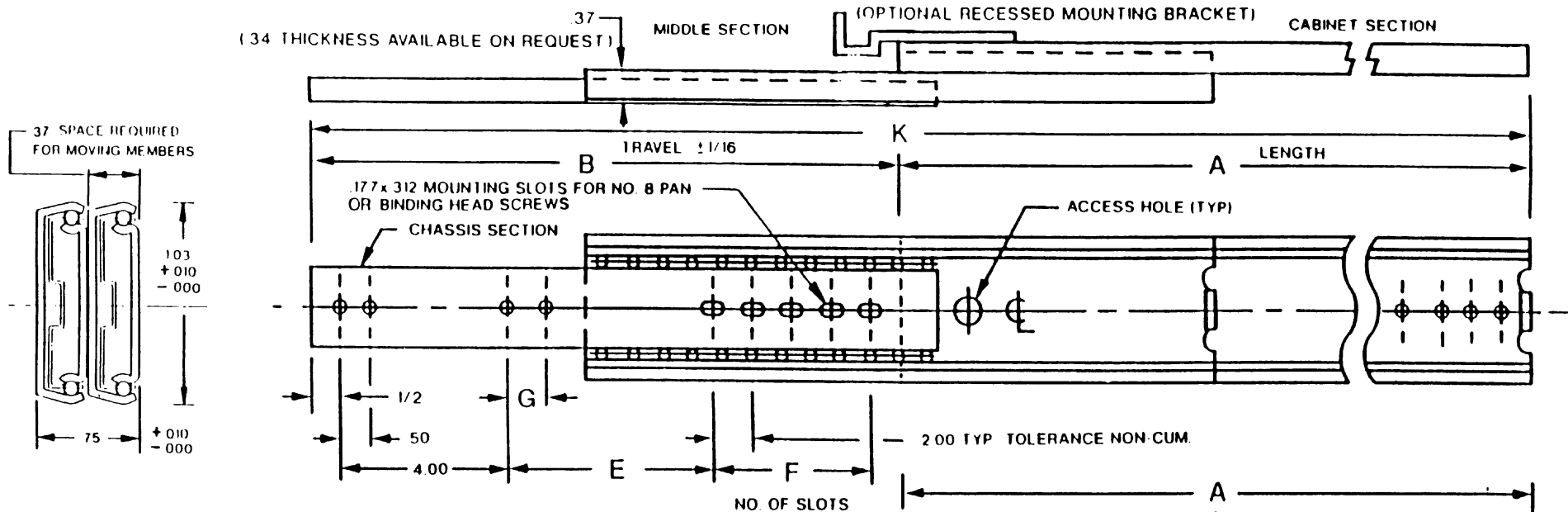


# "SLIM TRACK" 3-SECTION BALL-BEARING SLIDE MODEL: RIB



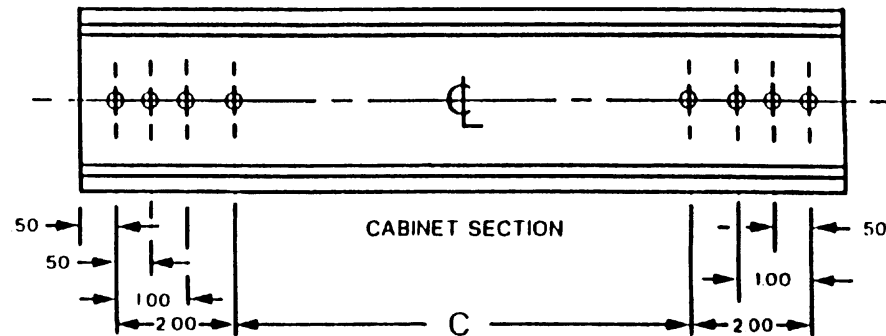
## NOTES:

MATERIAL: PRIME WORK HARDENED STEEL.  
 FINISH: BRIGHT ELECTRO-ZINC PLATED PER QQZ-325 TYPE I.  
 SILVER COLOR.  
 FRONT AND REAR MOUNTING BRACKETS ARE AVAILABLE.  
 ALL MOUNTING HOLES .177 DIA. FOR NO. 8 PAN OR BINDING HEAD SCREWS.  
 MOUNTING HOLE AND SLOT LOCATION TOLERANCE ±.005  
 ALL SLIDES ARE QUALITY ZINC PLATED.  
 LOAD CAPACITY TO 150 LBS.  
 \*LOAD RATINGS ARE BASED ON A PAIR OF 18" SLIDES WITH STANDARD EXTENSION.

Choice of positive locking in both directions in extended position or stop-out only which enables easy entry of chassis into cabinet without manipulation of catches.

Any choice of combinations of lengths, engagements, mounting hole patterns, etc., available at Barnes Engineering Company service at a nominal cost, or, in many cases at no additional cost.

Any load requirement available by stacking vertically and/or horizontally.  
 Additional holes at Barnes Engineering Co.'s option.



OUTER (CABINET SECTION) MOUNTING DETAILS SHOWN HERE FOR CLARITY

When ordering, please specify features needed, e.g.

RIB-20-PL (Positive locking when extended).

RIB-20-SO (Stop-out only)

-FD (Fast disconnect)

-LI (Lock-in)

RIBM (Military models)

Brackets and hardware available: see bracket pages.

Hole pattern may vary with (-PL-FD) and (-LI) features.

| SLIDE DIMENSIONS |    |    |    |       |   |   |    |
|------------------|----|----|----|-------|---|---|----|
| MODEL            | A  | B  | C  | E     | F | G | K  |
| RIB-10           | 10 | 11 | 5  | 4.50  | 1 |   | 21 |
| RIB-12           | 12 | 13 | 7  | 6.50  | 1 |   | 25 |
| RIB-14           | 14 | 15 | 9  | 6.50  | 2 |   | 29 |
| RIB-16           | 16 | 17 | 11 | 8.50  | 2 |   | 33 |
| RIB-18           | 18 | 19 | 13 | 8.50  | 3 |   | 37 |
| RIB-20           | 20 | 21 | 15 | 10.50 | 3 | 2 | 41 |
| RIB-22           | 22 | 23 | 17 | 10.50 | 4 | 2 | 45 |
| RIB-24           | 24 | 25 | 19 | 12.50 | 4 | 2 | 49 |
| RIB-26           | 26 | 27 | 21 | 12.50 | 5 | 2 | 53 |
| RIB-28           | 28 | 29 | 23 | 14.50 | 5 | 2 | 57 |
| RIB-30           | 30 | 31 | 25 | 16.50 | 5 | 2 | 61 |

PAGE 7

MAY 91



BARNES ENGINEERING COMPANY

2715 DELTA PLACE  
 COLORADO SPRINGS, CO 80910

PHONE: (719) 390-6500

FAX: (719) 390-6700