

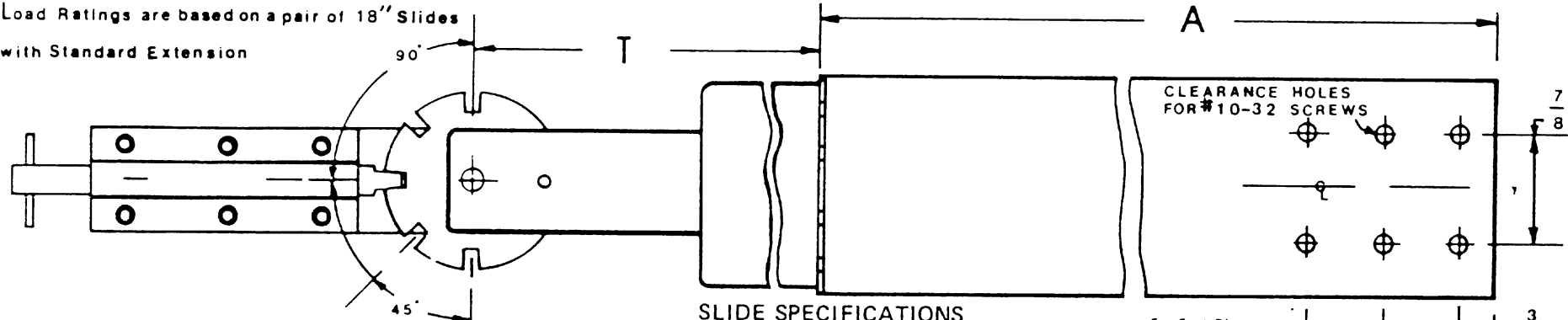
3- Section "ROTO-TRACK" Solid Bearing

* **NOMINAL LOAD RATING 125 POUNDS**

Series **ST-RT**

Chassis Slide - HEAVY DUTY

* Load Ratings are based on a pair of 18" Slides with Standard Extension

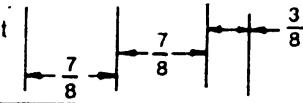


SLIDE SPECIFICATIONS

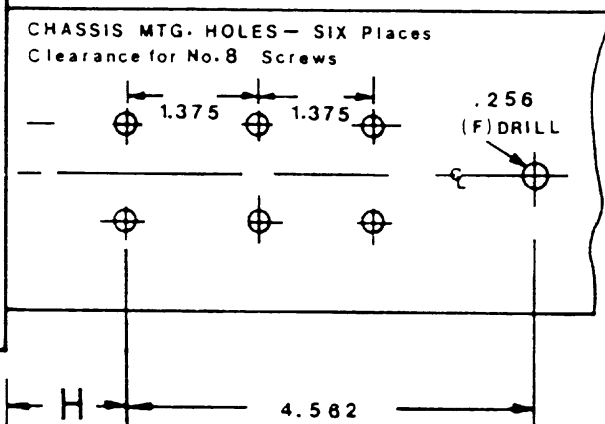
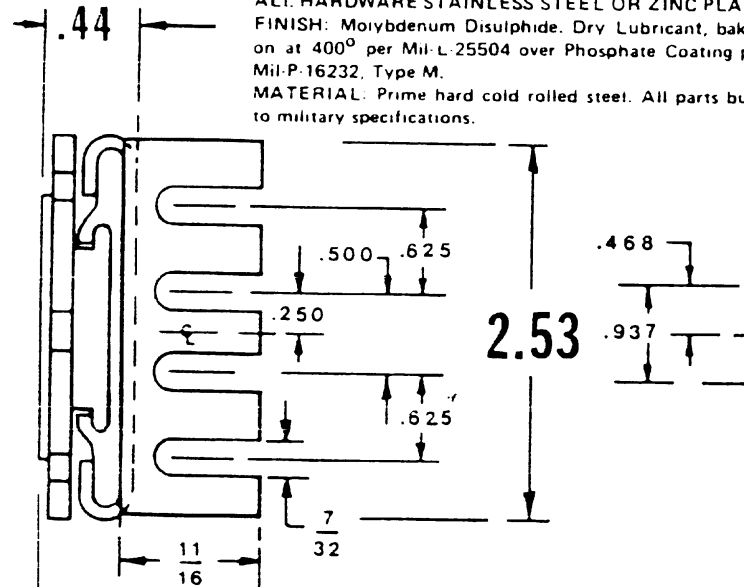
Choice of Positive Locking in both directions in extended position or Stop-Out only (stops coming out, but can be pushed back into cabinet without releasing any catches), enabling easy entry of chassis into cabinet without manipulation of catches. When ordering, specify as:
example: ST-RT-20-PL (Positive Locking when extended) or, ST-RT-20-SO (Stop-Out only).

For Fast Disconnect

specify as: -FD



ALL HARDWARE STAINLESS STEEL OR ZINC PLATE FINISH: Molybdenum Disulphide. Dry Lubricant, baked on at 400° per Mil-L-25504 over Phosphate Coating per Mil-P-16232, Type M.
MATERIAL: Prime hard cold rolled steel. All parts built to military specifications.



MODEL NO.	A	T	H	
			Min.	Max.
ST-RT-10	10	Check	1.31	
ST-RT-12	12	with factory	1.31	
ST-RT-14	14	9.50	1.31	
ST-RT-16	16	11.50	1.31	
ST-RT-18	18	13.50	1.31	
ST-RT-20	20	15.50	1.31	
ST-RT-22	22	17.50	1.31	
ST-RT-24	24	19.50	1.31	
ST-RT-26	26	21.50	1.31	
ST-RT-28	28	23.50	1.31	
ST-RT-30	30	25.50	1.31	

Slides shipped with standard 2" rear mounting brackets. If specified, any one of the following size rear mounting brackets will be shipped with slides. 4" 6" 8" 10" 12"

Space required for Moving Members

BARNES ENGINEERING COMPANY

"SLIM-TRACK" SLIDES